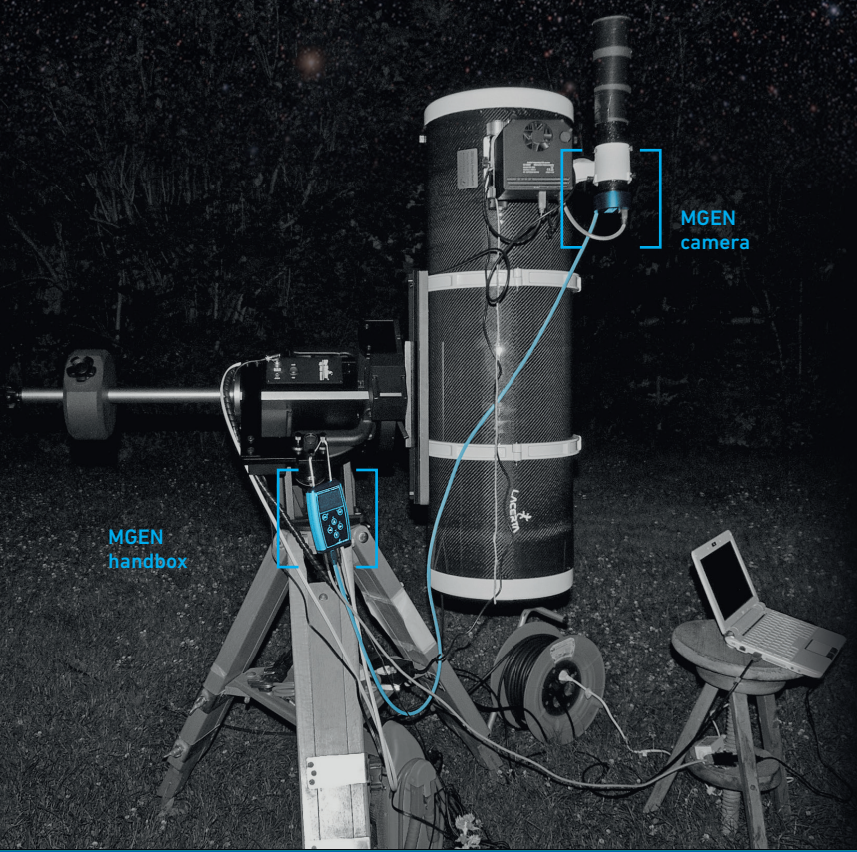




COMET JACOUES AND NGC1848 (EMBRYO NEBULA) • 200MM TELEOBJECTIVE STAR ADVENTURER MGEN • © TOMMY NAVRATIL • TELESKOP-AUSTRIA.AT



MGEN camera

MGEN handbox

LACERTA GmbH
Telescope and
Microscope Center
 Schoenbrunner str. 96.
 A-1050 VIENNA
 Austria / EU

shop-wien@teleskop-austria.com
 www.teleskop-austria.com
 www.teleskop-austria.at
 +43 699 1197 0808



MGEN SUPERGUIDER

- ▶ pinpoint precision
- ▶ easy to use
- ▶ proven reliabilty

NGC7331 GROUP • LACERTA 250/1000 PHOTONEWTON. E36. MGEN • © TOMMY NAVRATIL • TELESKOP-AUSTRIA.AT

The top 10 features

Why do we call MGEN „superguider“?

interstellarium
ASTRO-NEUHEIT
DES JAHRES 2010



reliability and precision,
pinpoint stars every time



easiness of use:
find guidestar
automatically,
calibrate, guide

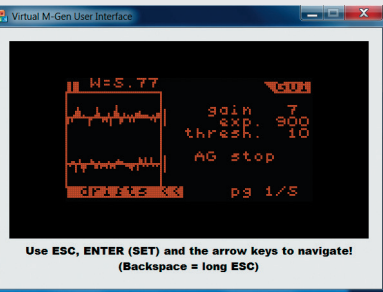


MGEN's task is not only providing correction signals for your mount, to ensure getting nicely round stars on your photos. A full exposure control for DSLR makes an external timer obsolete. MGEN also guides your guidestar to a new position at every subframe, so that hotpixels and dark current patterns do not coincide at stacking, and can be evened out effectively. This is called dithering and gold standard in modern imaging, and can also be used with your CCD camera.

Guiding is made easy, find a guide star automatically, run the calibration routine and start autoguiding – done! The guide star is seen live on screen, or you can switch the screen to show the star drifts and optimize them by changing the parameters. Once done, the data are stored and ready to use every time. You are free to use your laptop, or use MGEN as standalone, the screen is just the same. MGEN also provides diagrams to control and analyse your guiding, so possible problems with mount or flexure can be distinguished, and you are guided to get them right.

There is no other solution that can do all these things for you in a single, simple and proven package. Get MGEN, get things done!

SCREEN SHOT (LIVE VIEW):
MGEN & 9x50 FINDERSCOPE
OBJECT: M45 (PLEIADE)
LIMITING MAGNITUDE: 10,5 MAG
SCREEN DIAGONAL: 1,5°
DRIFT CORRECTION: 1/30 PIXEL



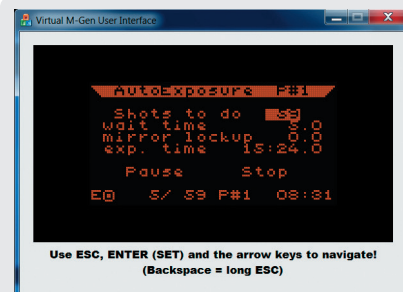
full guide
parameter control



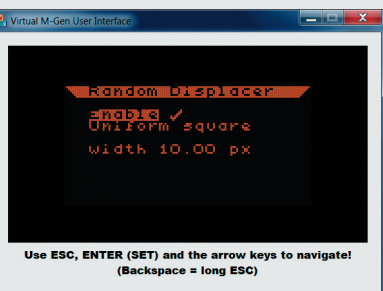
easy install: use
9x50 finder to guide
your telescopes



practice-proven and
recommended by
hundreds of german
astrophotographers



full exposure
control of DSLR



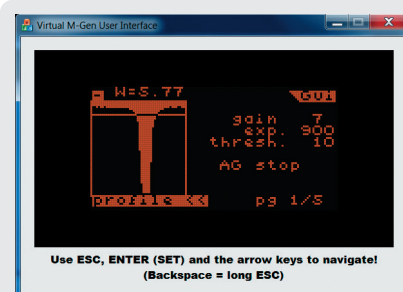
synchronized
dithering for
cleanest pictures



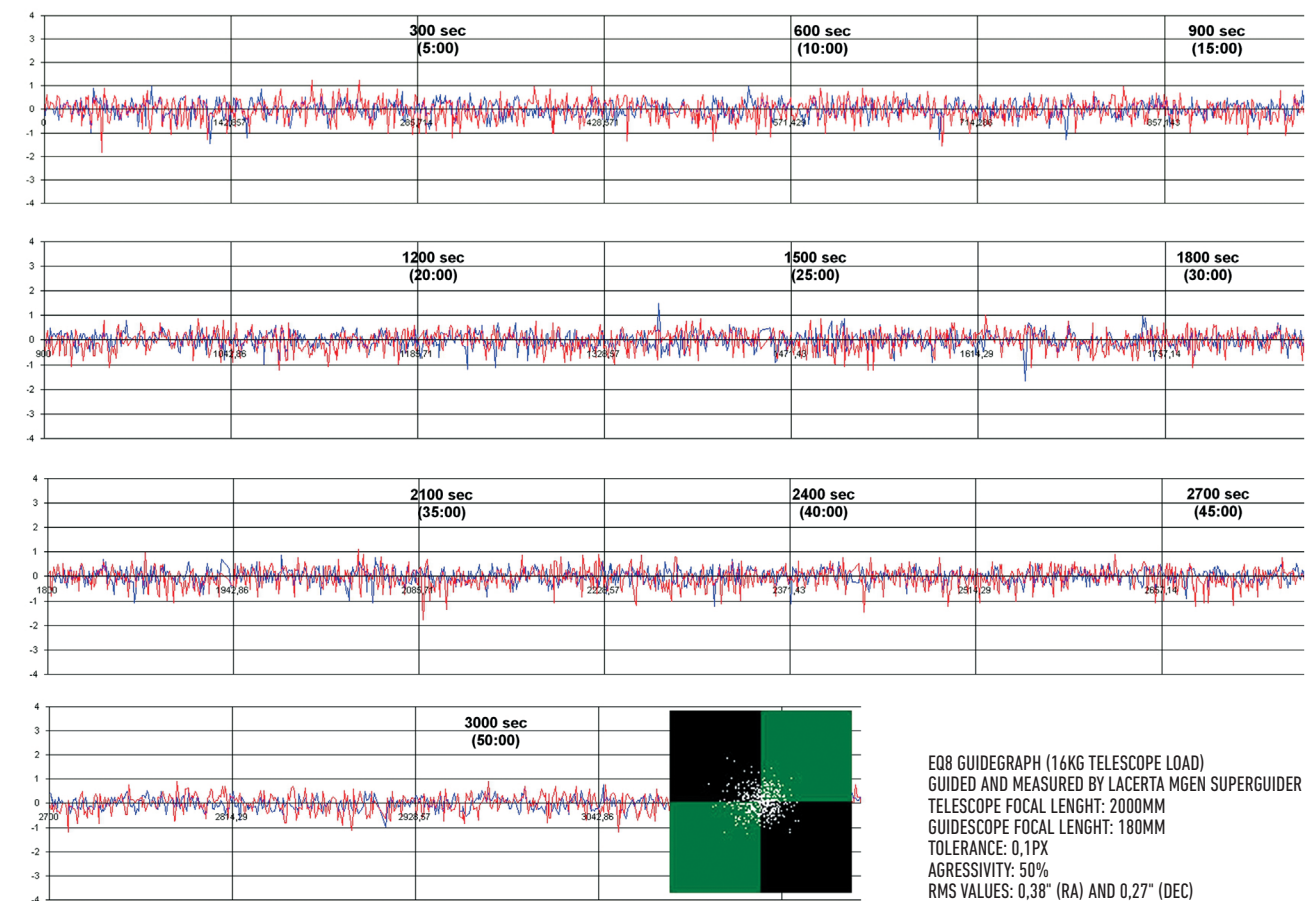
use as standalone
guider, no PC needed



use with Laptop
and DSLR or CCD –
plugins for MaximDL
or APT available



guiding response
report, to analyse
mount or setup
related problems



EQ8 GUIDEGRAPH (16KG TELESCOPE LOAD)
GUIDED AND MEASURED BY LACERTA MGEN SUPERGUIDER
TELESCOPE FOCAL LENGTH: 2000MM
GUIDESCOPE FOCAL LENGTH: 180MM
TOLERANCE: 0,1PX
AGRESSIVITY: 50%
RMS VALUES: 0,38" (RA) AND 0,27" (DEC)